

# INDUSTRIAL PROPERTY FOR LEASE 8,000 - 17207 SF Available



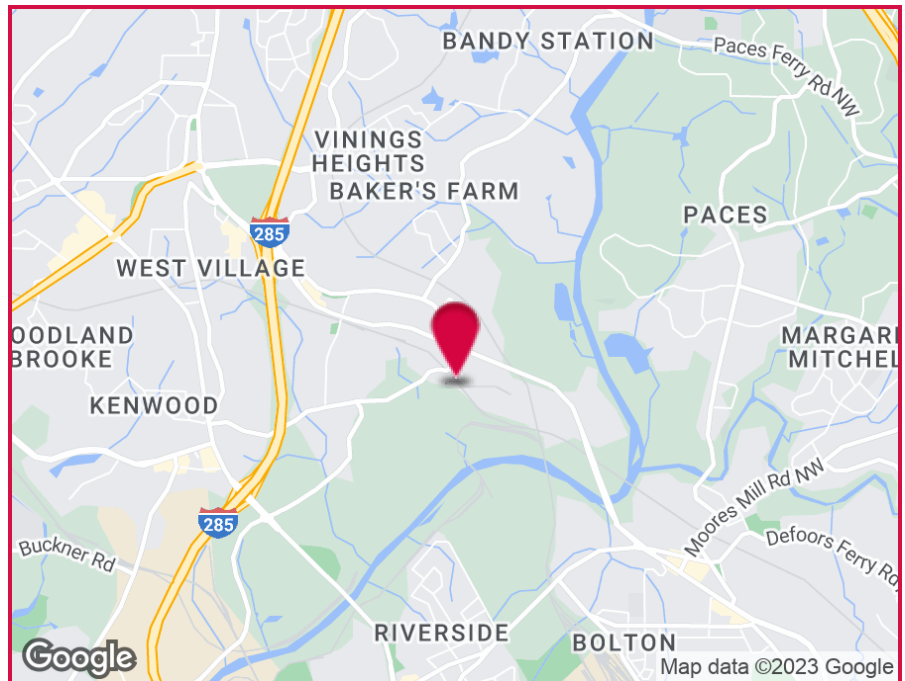
2961 Olympic Industrial Drive, Suite A, Smyrna, GA 30080

## OFFERING SUMMARY

**Available SF:** 8,000 SF  
**Lot Size:** 3.93 Acres  
**Year Built:** 1971  
**Building Size:** 72,240 SF  
**Zoning:** HI

## PROPERTY HIGHLIGHTS

- 1,045 SF Office
- 2 Dock High Doors
- 17' Clear Height
- 2,000 SF Fenced Storage
- Quick Access to I-285 & I-75



For More Information Contact:

**WILSON COVINGTON, SIOR**  
Senior Vice President  
404.942.2073  
wcovington@kingindustrial.com

**RANDALL BRYAN, SIOR**  
Vice President  
404.942.2015  
rbryan@kingindustrial.com

# INDUSTRIAL PROPERTY FOR LEASE 8,000 - 17207 SF Available



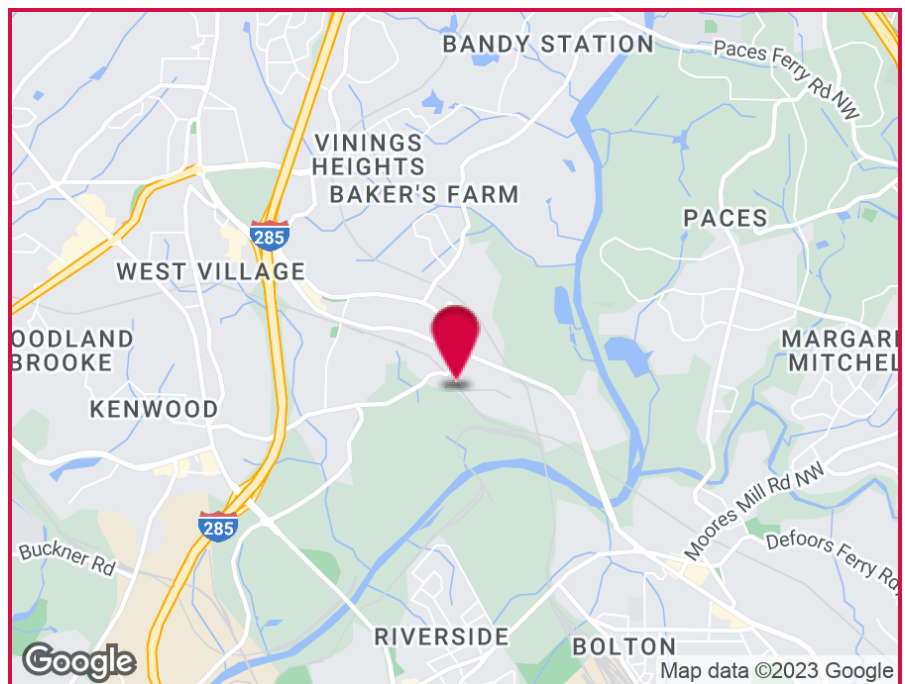
2961 Olympic Industrial Drive, Suites A & B, Smyrna, GA 30080

## OFFERING SUMMARY

**Available SF:** 17,207 SF  
**Lot Size:** 3.93 Acres  
**Year Built:** 1971  
**Building Size:** 72,240 SF  
**Zoning:** HI

## PROPERTY HIGHLIGHTS

- Suite B: 9,207 SF
- Suite A: 8,000 SF
- 1,045 SF Office
- 3 Dock High Doors
- 1 Drive In Door
- 17' Clear Height
- Quick Access to I-285 & I-75



For More Information Contact:

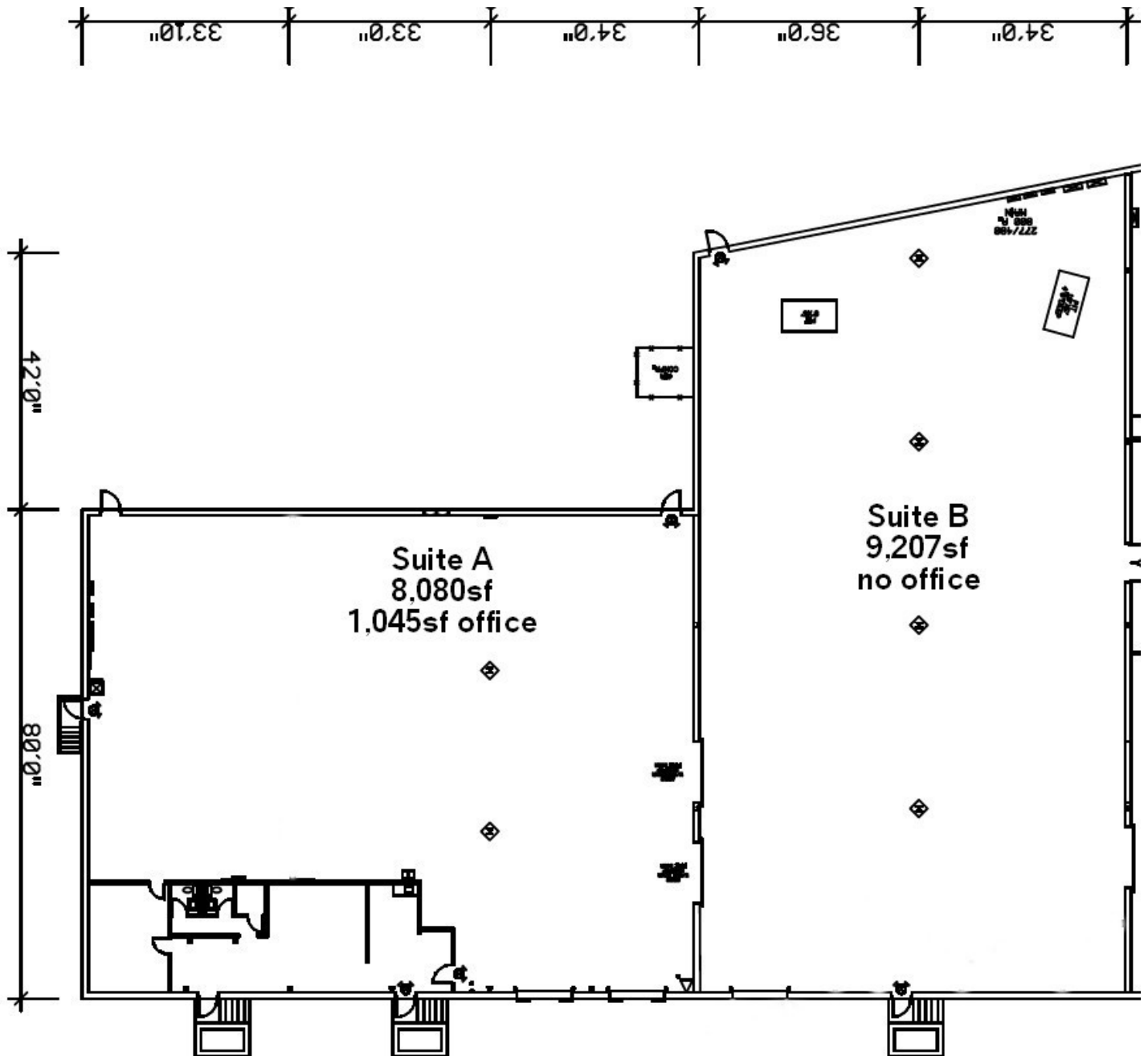
**WILSON COVINGTON, SIOR**  
Senior Vice President  
404.942.2073  
wcovington@kingindustrial.com

**RANDALL BRYAN, SIOR**  
Vice President  
404.942.2015  
rbryan@kingindustrial.com

# INDUSTRIAL PROPERTY FOR LEASE

## 8,000 - 17,207 SF Available

2961 Olympic Industrial Drive, Smyrna, GA 30080



For More Information Contact:

**WILSON COVINGTON, SIOR**

Senior Vice President

404.942.2073

wcovington@kingindustrial.com

**RANDALL BRYAN, SIOR**

Vice President

404.942.2015

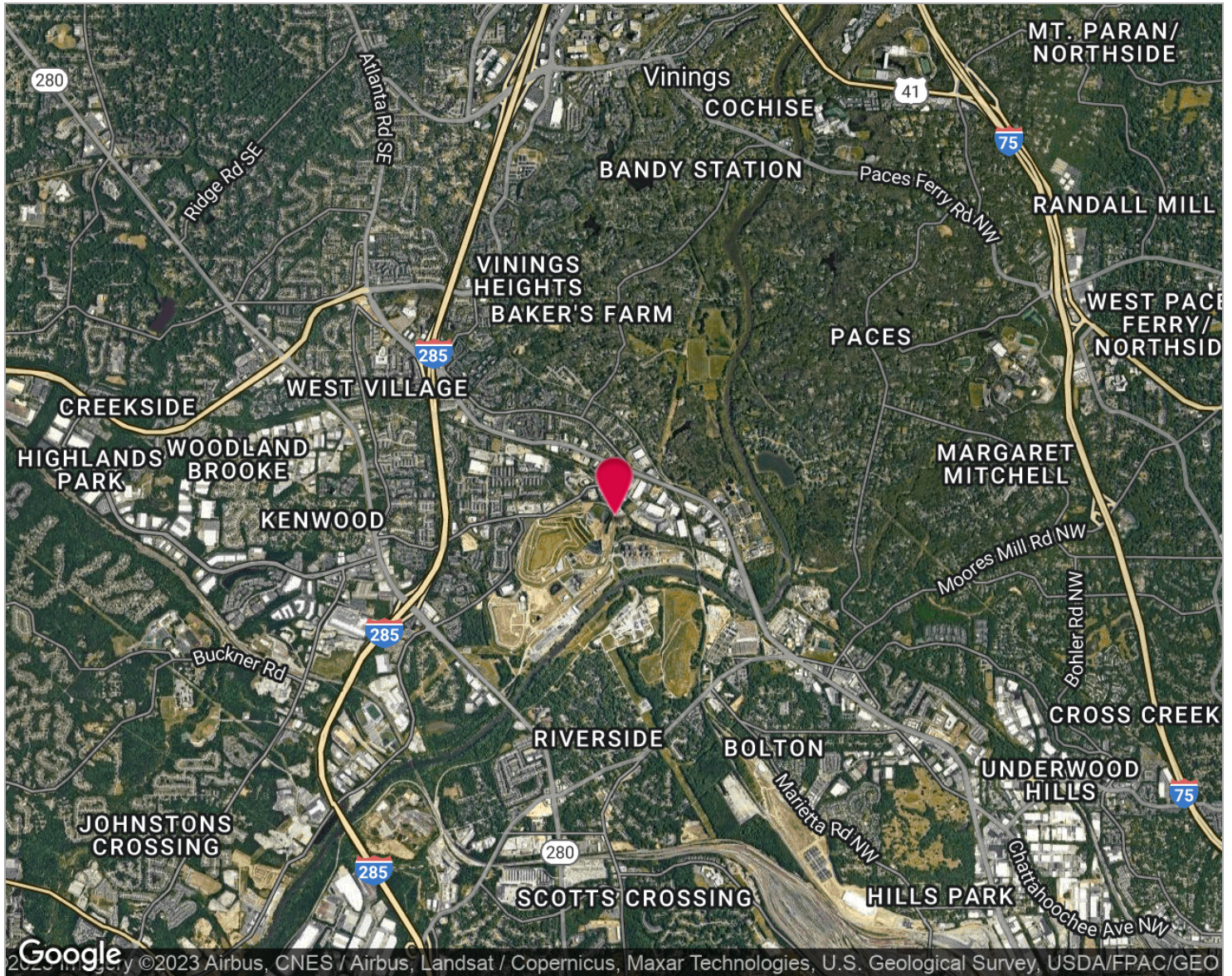
rbryan@kingindustrial.com



# INDUSTRIAL PROPERTY FOR LEASE

## 8,000 - 17207 SF Available

2961 Olympic Industrial Drive, Smyrna, GA 30080



### LOCATION DESCRIPTION

Great location in Cobb County. Inside I-285.

For More Information Contact:

**WILSON COVINGTON, SIOR**

Senior Vice President

404.942.2073

wcovington@kingindustrial.com

**RANDALL BRYAN, SIOR**

Vice President

404.942.2015

rbryan@kingindustrial.com