

LAND FOR SALE

0.34+/- Acre Beltline Overlay District



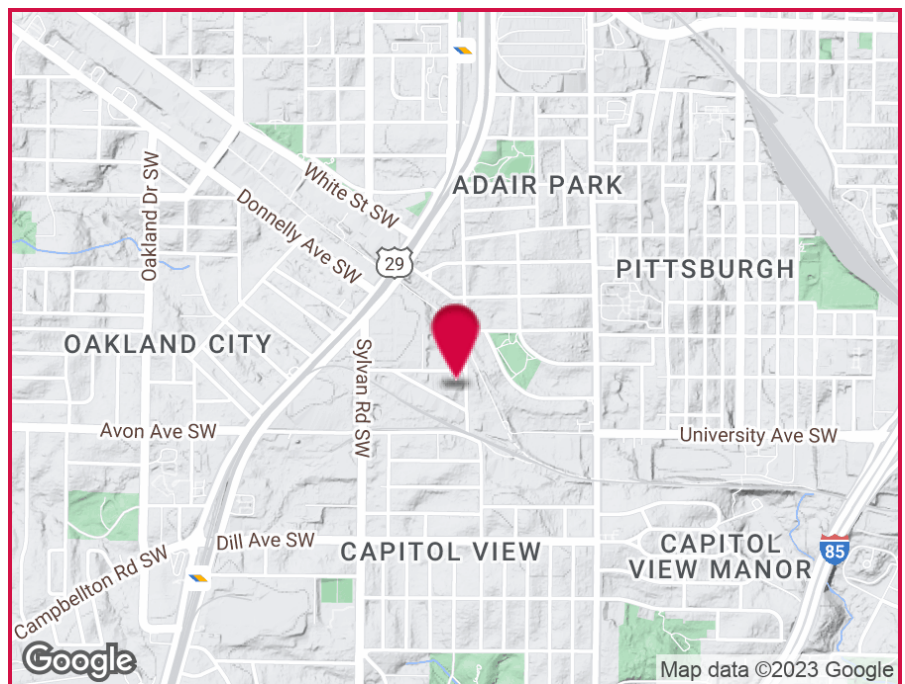
1121 Allene Avenue, Atlanta, GA 30310

OFFERING SUMMARY

Lot Size: 0.34 Acres
Zoning: I-1

PROPERTY HIGHLIGHTS

- Beltline Overlay District
- 100' Frontage Allene Avenue
- 150' Frontage Warner Street
- Light Industrial Zoning
- Concrete Slab on Property



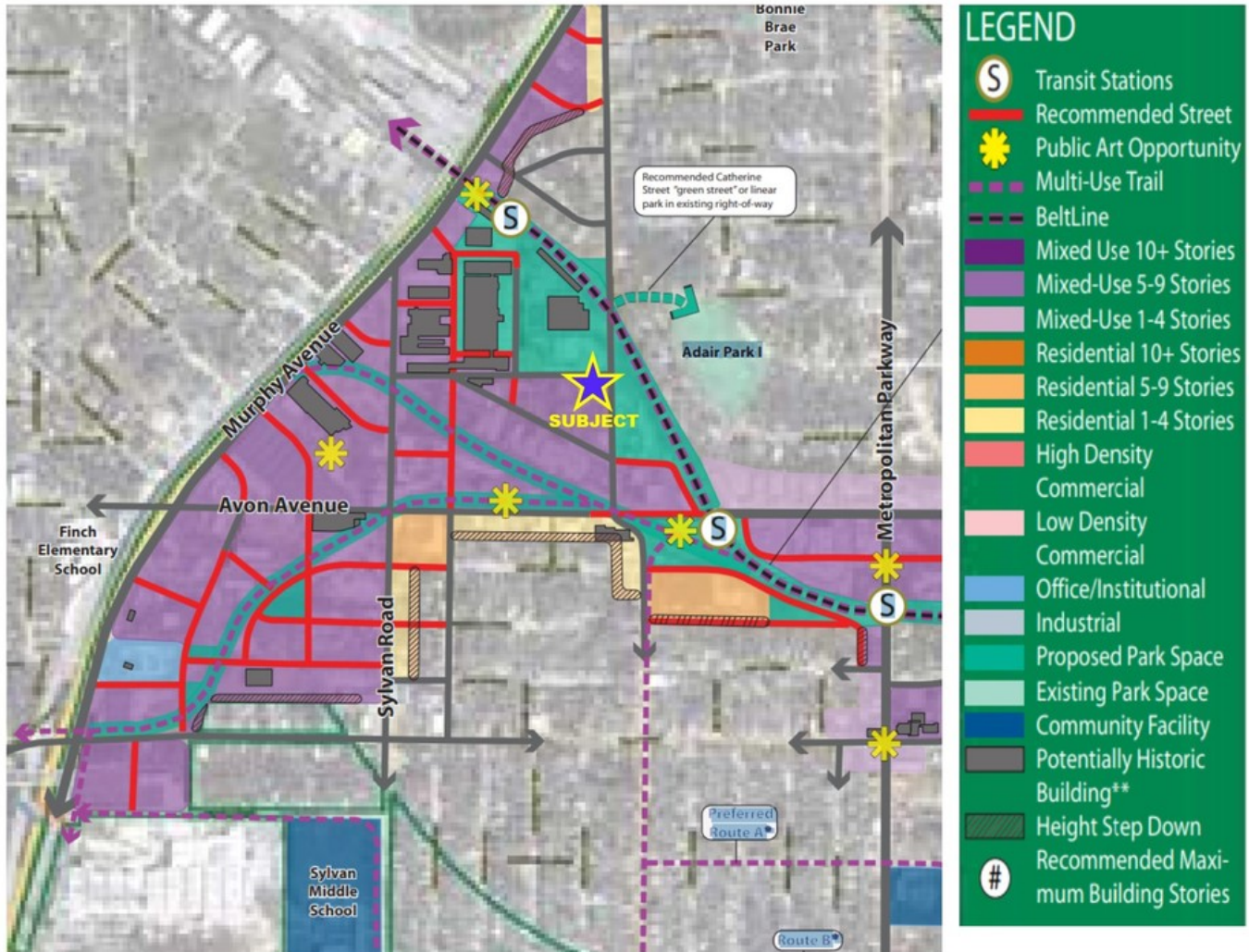
For More Information Contact:

BRIAN BRATTON, SIOR
Vice President
404.942.2028
bbratton@kingindustrial.com

STEVE RATCHFORD, SIOR, CCIM
Senior Vice President
404.942.2003
sratchford@kingindustrial.com

LAND FOR SALE

0.34+/- Acre Beltline Overlay District
1121 Allene Avenue, Atlanta, GA 30310



Beltline Map

For More Information Contact:

BRIAN BRATTON, SIOR

Vice President

404.942.2028

bbratton@kingindustrial.com

STEVE RATCHFORD, SIOR, CCIM

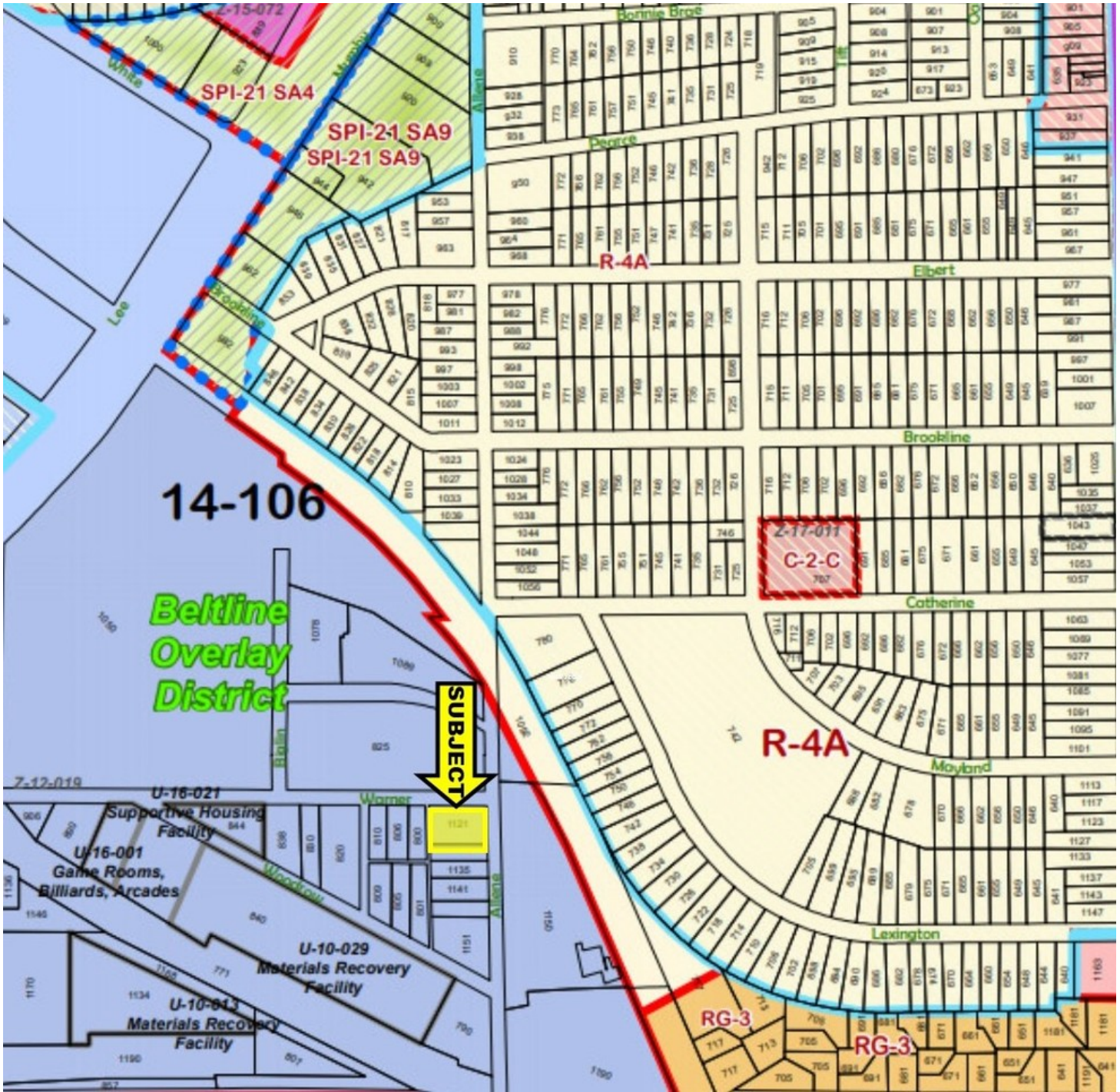
Senior Vice President

404.942.2003

sratchford@kingindustrial.com

0.34+/- Acre Beltline Overlay District
1121 Allene Avenue, Atlanta, GA 30310

King Industrial
Realty, Inc.



Zoning Map

For More Information Contact:

STEVE RATCHFORD, SIOR, CCIM

Senior Vice President

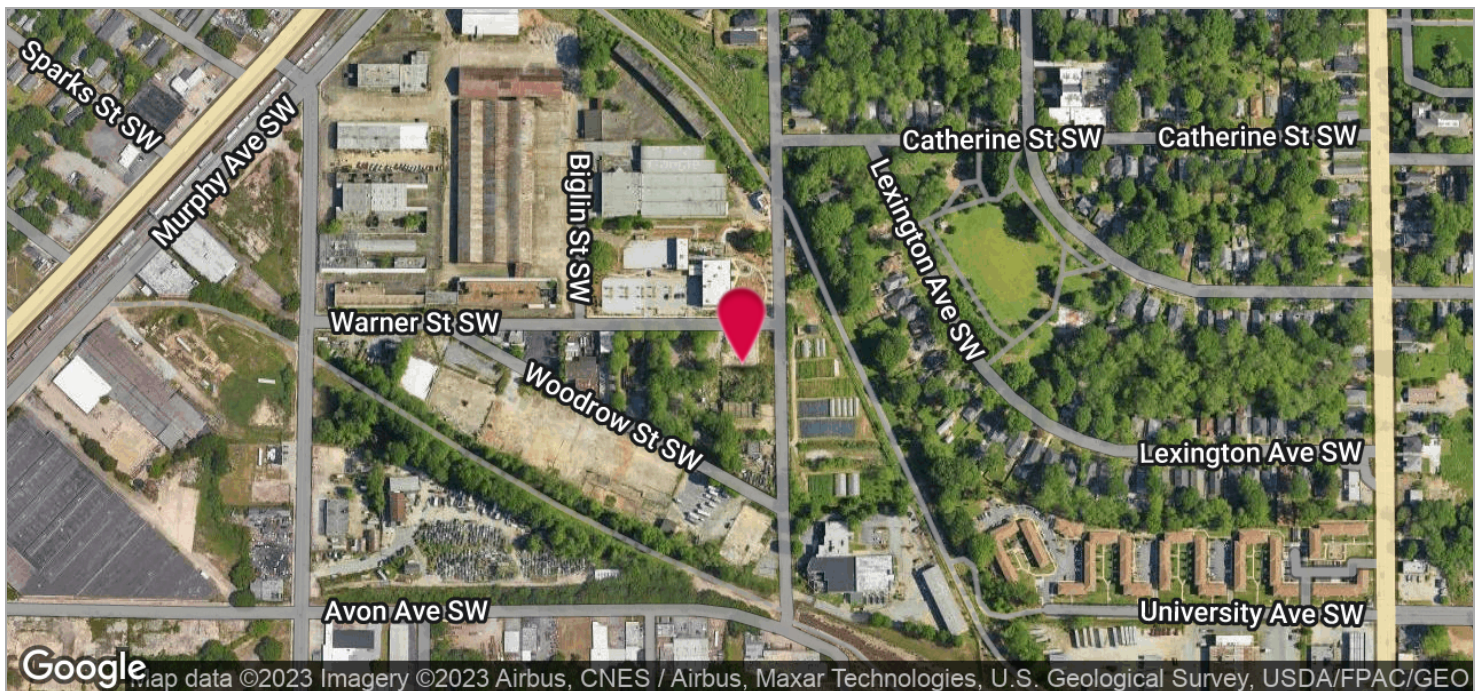
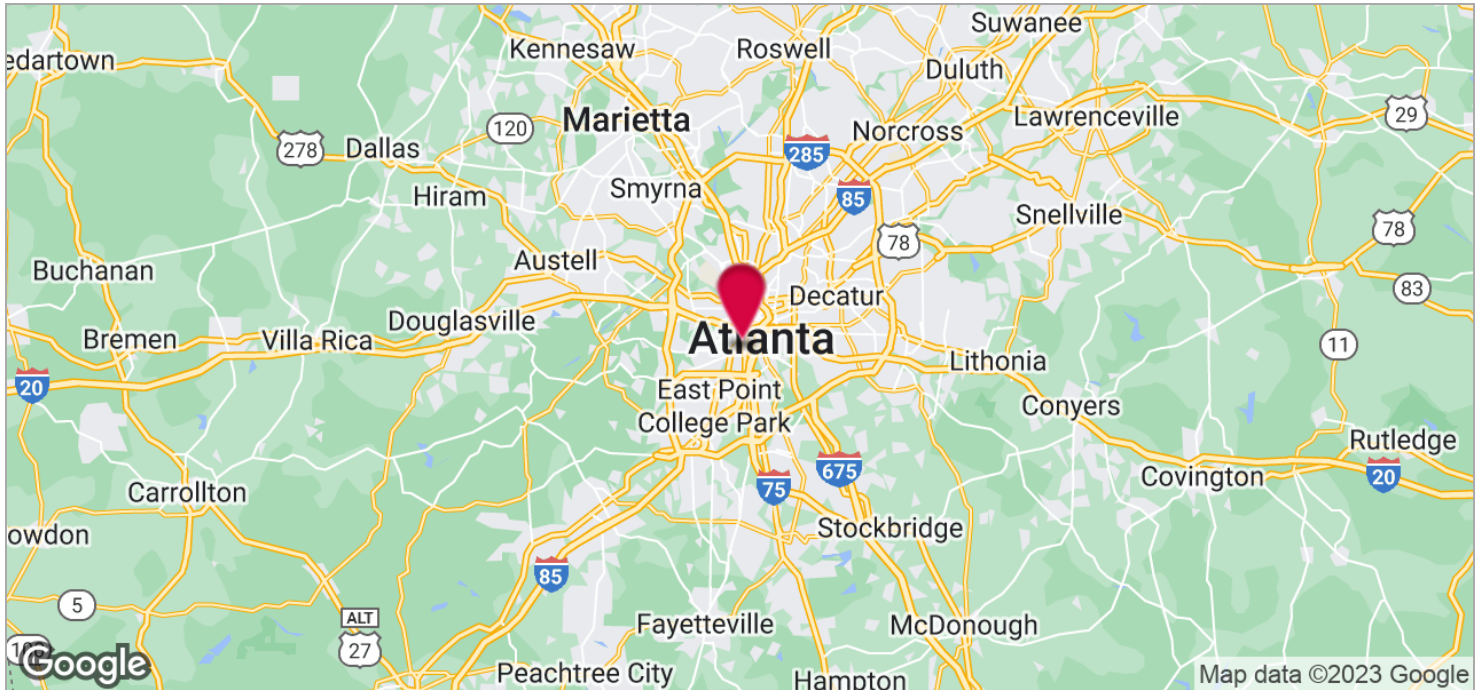
404.942.2003

sratchford@kingindustrial.com

LAND FOR SALE

0.34+/- Acre Beltline Overlay District
1121 Allene Avenue, Atlanta, GA 30310

KING Industrial
Realty, Inc.



For More Information Contact:

BRIAN BRATTON, SIOR

Vice President

404.942.2028

bbratton@kingindustrial.com

STEVE RATCHFORD, SIOR, CCIM

Senior Vice President

404.942.2003

sratchford@kingindustrial.com