

INDUSTRIAL PROPERTY FOR LEASE 2,294+/- SF Building Available

King Industrial
Realty, Inc.



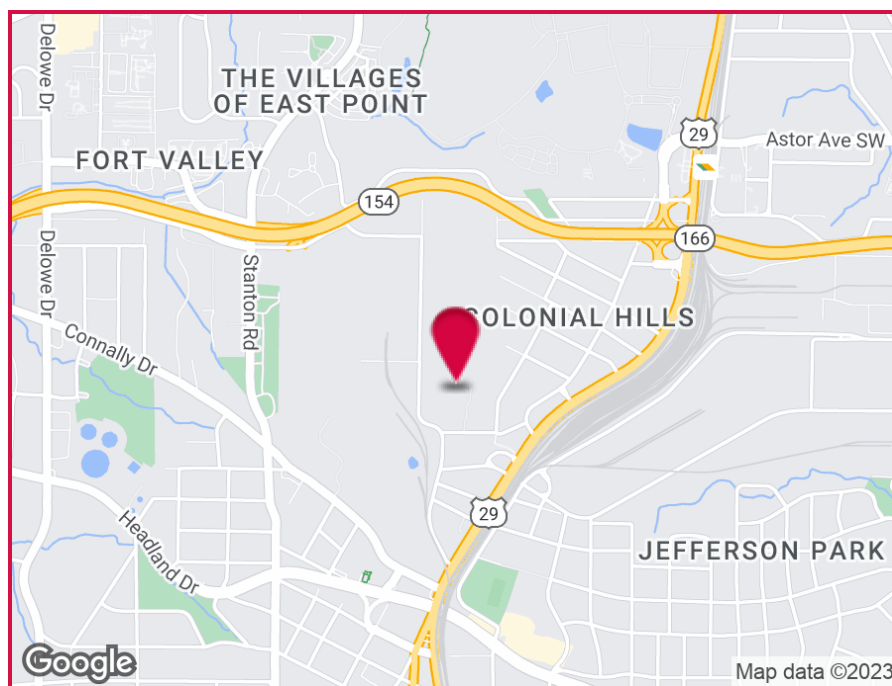
1557 Saint Joseph Avenue, East Point, GA 30344

OFFERING SUMMARY

Available SF: 2,294
Zoning: I-1

PROPERTY HIGHLIGHTS

- Loft Office with Vaulted Ceilings
- Large Open Office Area
- 3 Private Offices
- 2 Restrooms
- Convenient Double Personnel Doors
- Ample Parking
- Easy Access to Langford Parkway & Interstates



For More Information Contact:

STEVE RATCHFORD, SIOR, CCIM

Senior Vice President

404.942.2003

sratchford@kingindustrial.com

BRIAN BRATTON, SIOR

Vice President

404.942.2028

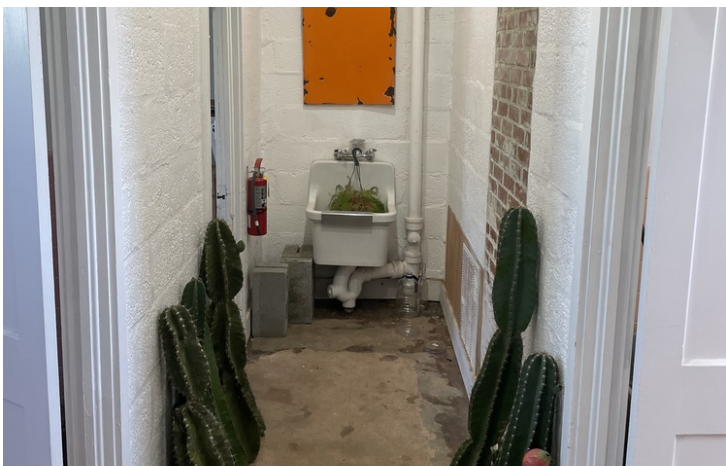
bbratton@kingindustrial.com

INDUSTRIAL PROPERTY FOR LEASE

2,294+/- SF Building Available

1557 Saint Joseph Avenue, East Point, GA 30344

King Industrial
Realty, Inc.



For More Information Contact:

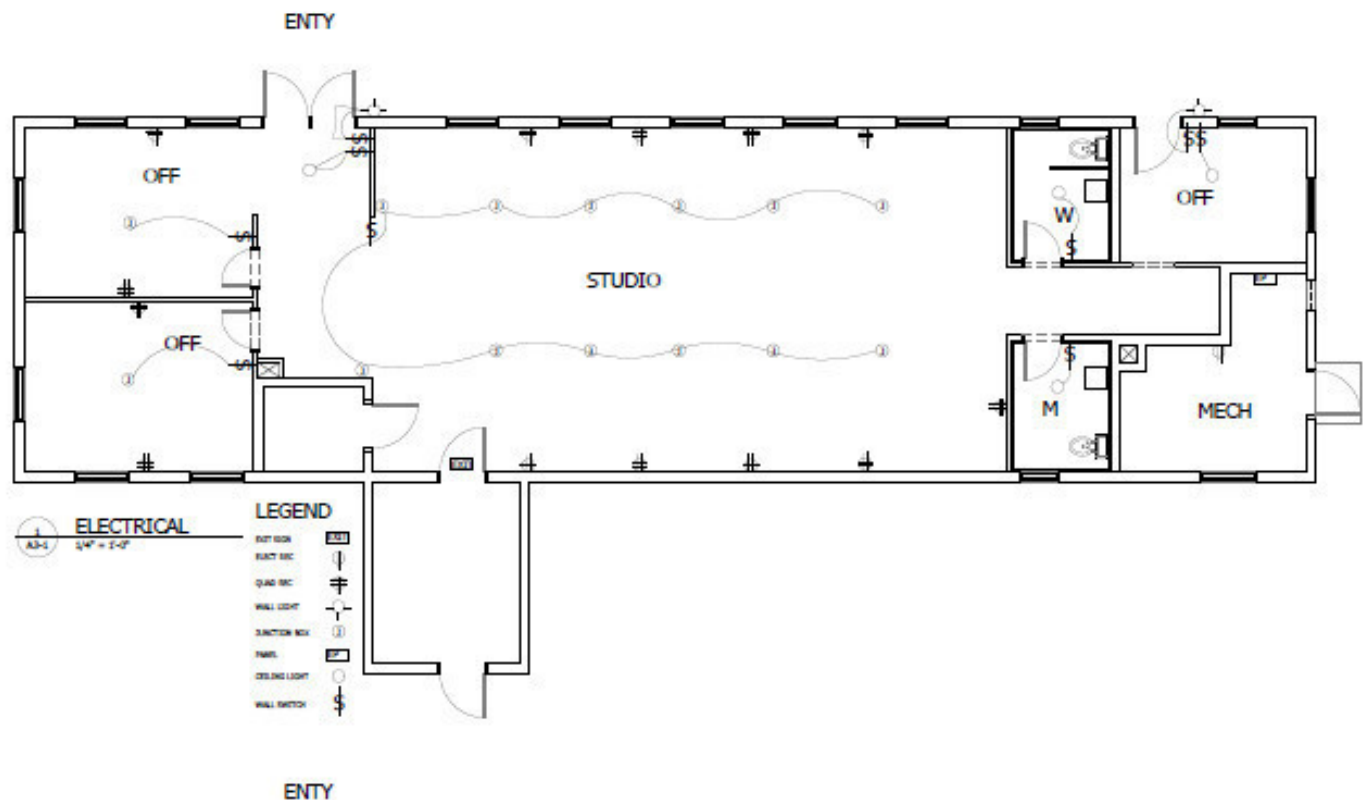
STEVE RATCHFORD, SIOR, CCIM
Senior Vice President
404.942.2003
sratchford@kingindustrial.com

BRIAN BRATTON, SIOR
Vice President
404.942.2028
bbratton@kingindustrial.com

INDUSTRIAL PROPERTY FOR LEASE

2,294+/- SF Building Available

1557 Saint Joseph Avenue, East Point, GA 30344



Floor Plan Gate House 2,294+/- SF

For More Information Contact:

STEVE RATCHFORD, SIOR, CCIM

Senior Vice President

404.942.2003

sratchford@kingindustrial.com

BRIAN BRATTON, SIOR

Vice President

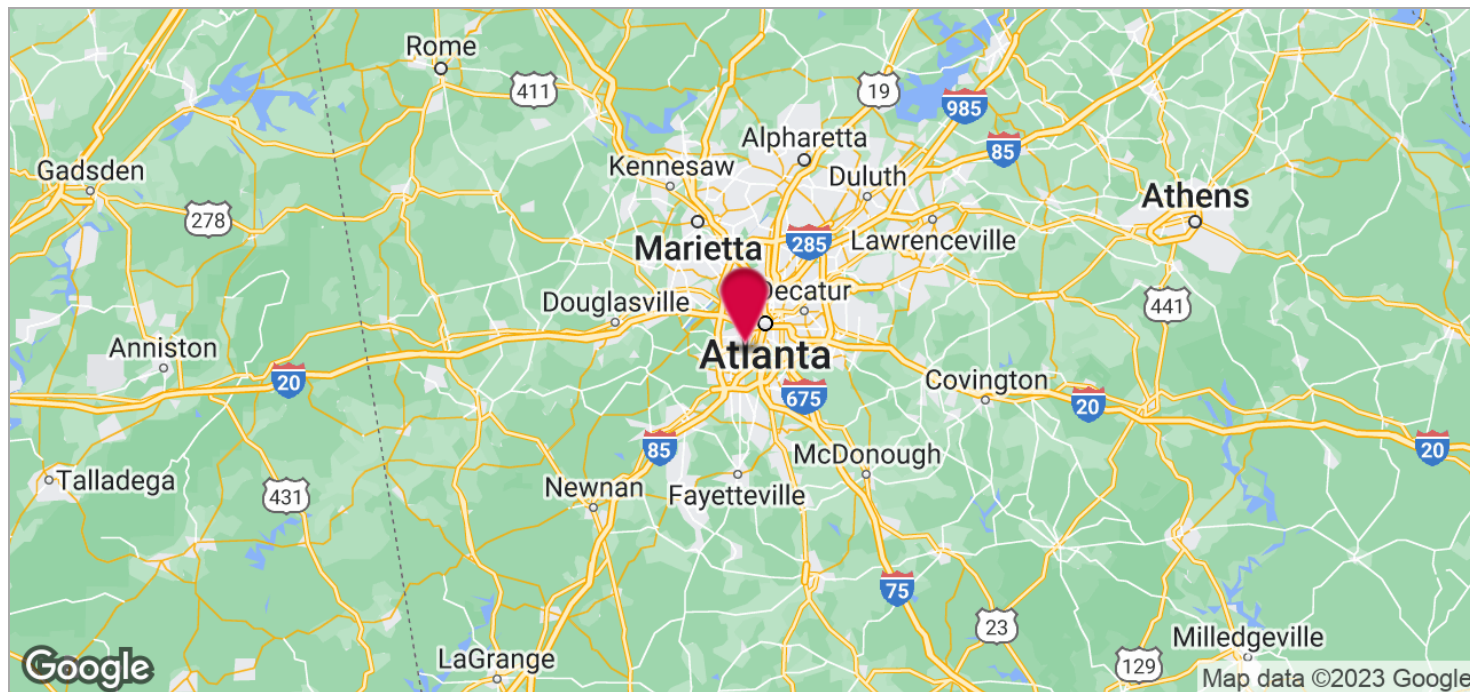
404.942.2028

bbratton@kingindustrial.com

INDUSTRIAL PROPERTY FOR LEASE 2,294+/- SF Building Available

1557 Saint Joseph Avenue, East Point, GA 30344

KING Industrial
Realty, Inc.



For More Information Contact:

STEVE RATCHFORD, SIOR, CCIM

Senior Vice President

404.942.2003

sratchford@kingindustrial.com

BRIAN BRATTON, SIOR

Vice President

404.942.2028

bbratton@kingindustrial.com