

INDUSTRIAL PROPERTY FOR SALE

21,000+/- SF



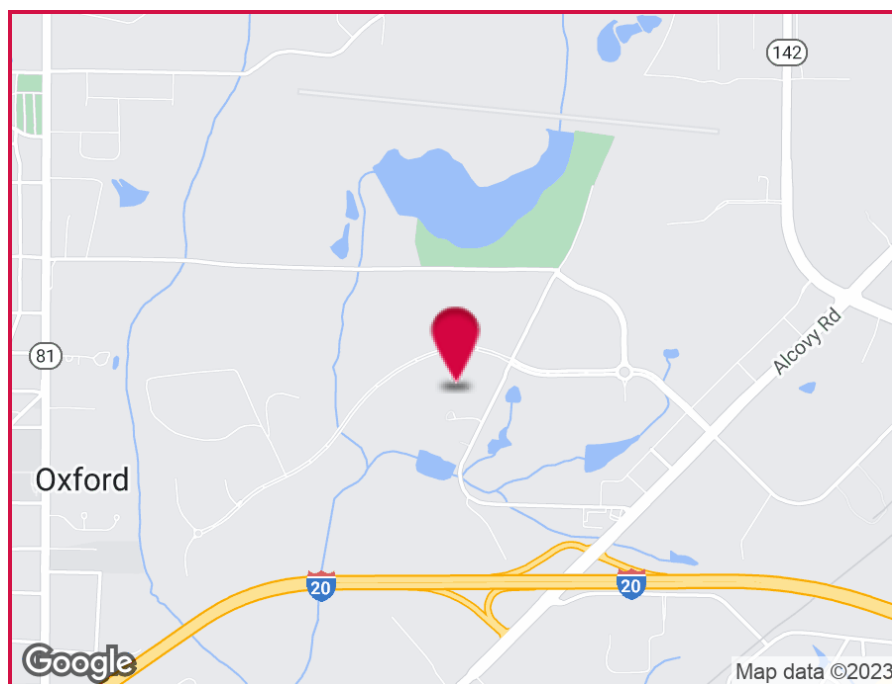
11130 Bobby Williams Parkway, Covington, GA 30014

OFFERING SUMMARY

Lot Size: 4.0 Acres
Year Built: 2007
Building Size: 21,000 SF

PROPERTY HIGHLIGHTS

- Single Tenant Occupancy
- 2,000 SF Office
- 3.78+/- Acre Lot
- 1 Covered Dock / Staging Area
- 4 Oversized Grade Level Doors
- Fenced Outside Storage



For More Information Contact:

JASON MCCART, SIOR

Senior Vice President

770.601.5451

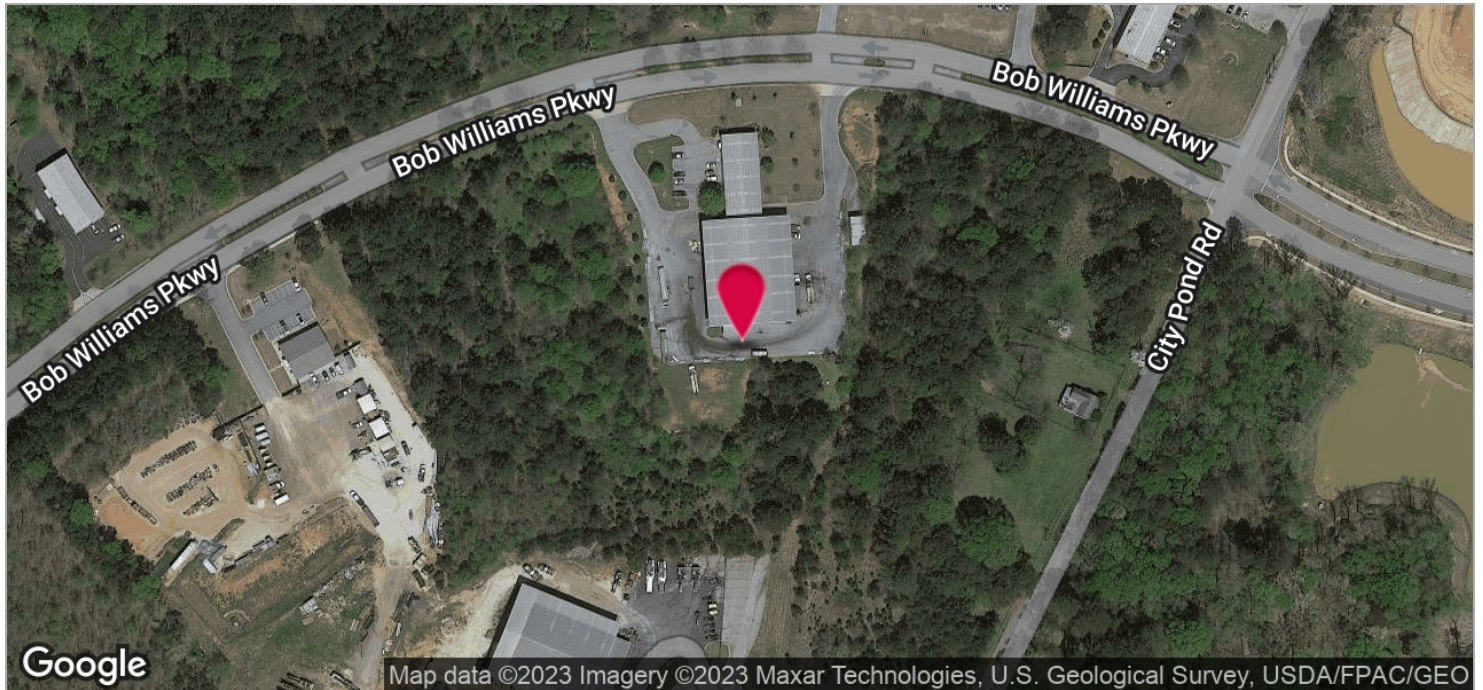
jmccart@kingindustrial.com

INDUSTRIAL PROPERTY FOR SALE

21,000+/- SF

11130 Bobby Williams Parkway, Covington, GA 30014

KING Industrial
Realty, Inc.



For More Information Contact:

JASON MCCART, SIOR

Senior Vice President

770.601.5451

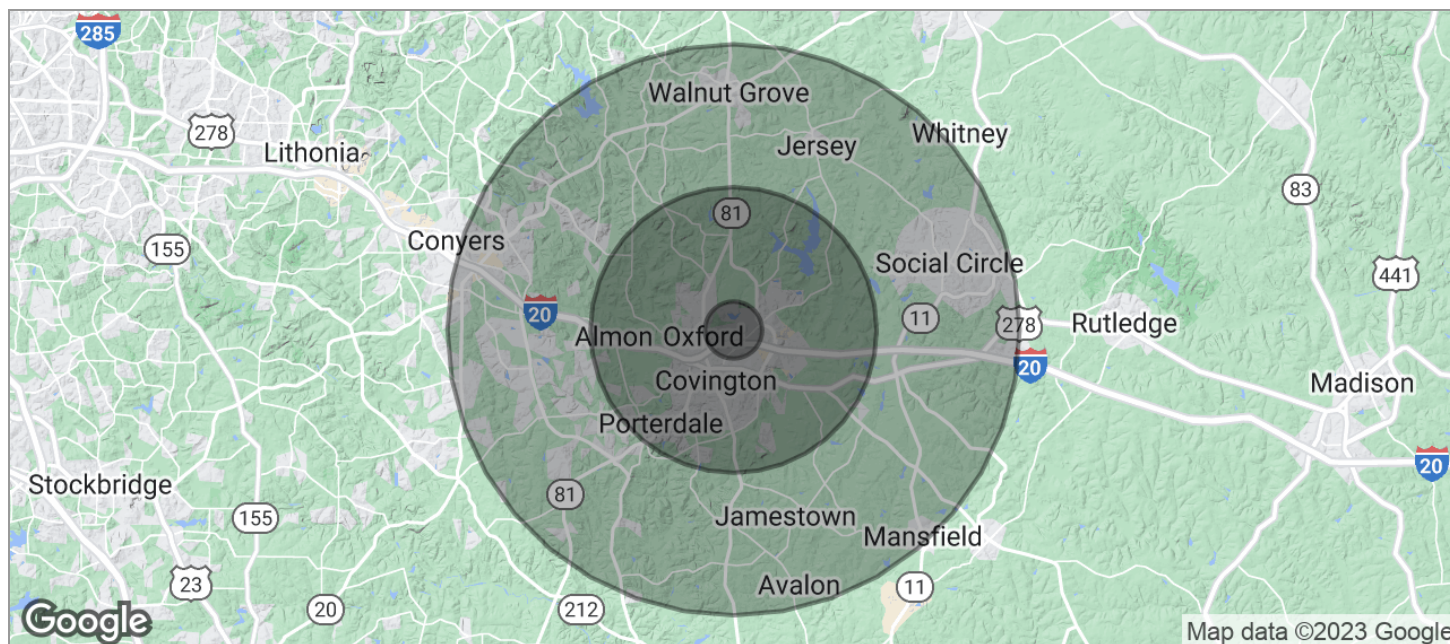
jmccart@kingindustrial.com

INDUSTRIAL PROPERTY FOR SALE

21,000+/- SF

11130 Bobby Williams Parkway, Covington, GA 30014

KING Industrial
Realty, Inc.



POPULATION	1 MILE	5 MILES	10 MILES
TOTAL POPULATION	1,723	32,670	120,714
MEDIAN AGE	28.4	33.6	34.4
MEDIAN AGE (MALE)	28.3	31.5	32.1
MEDIAN AGE (FEMALE)	28.6	35.2	35.9
HOUSEHOLDS & INCOME	1 MILE	5 MILES	10 MILES
TOTAL HOUSEHOLDS	525	11,208	41,910
# OF PERSONS PER HH	3.3	2.9	2.9
AVERAGE HH INCOME	\$57,921	\$61,818	\$61,523
AVERAGE HOUSE VALUE	\$190,791	\$194,111	\$183,078
RACE	1 MILE	5 MILES	10 MILES
% WHITE	53.9%	58.8%	55.5%
% BLACK	37.3%	36.6%	39.5%
% ASIAN	6.0%	1.7%	1.1%
% HAWAIIAN	0.0%	0.0%	0.0%
% INDIAN	0.0%	0.2%	0.5%
% OTHER	1.9%	1.8%	1.5%
ETHNICITY	1 MILE	5 MILES	10 MILES
% HISPANIC	2.2%	4.2%	5.0%

* Demographic data derived from 2020 ACS - US Census

For More Information Contact:

JASON MCCART, SIOR

Senior Vice President

770.601.5451

jmccart@kingindustrial.com